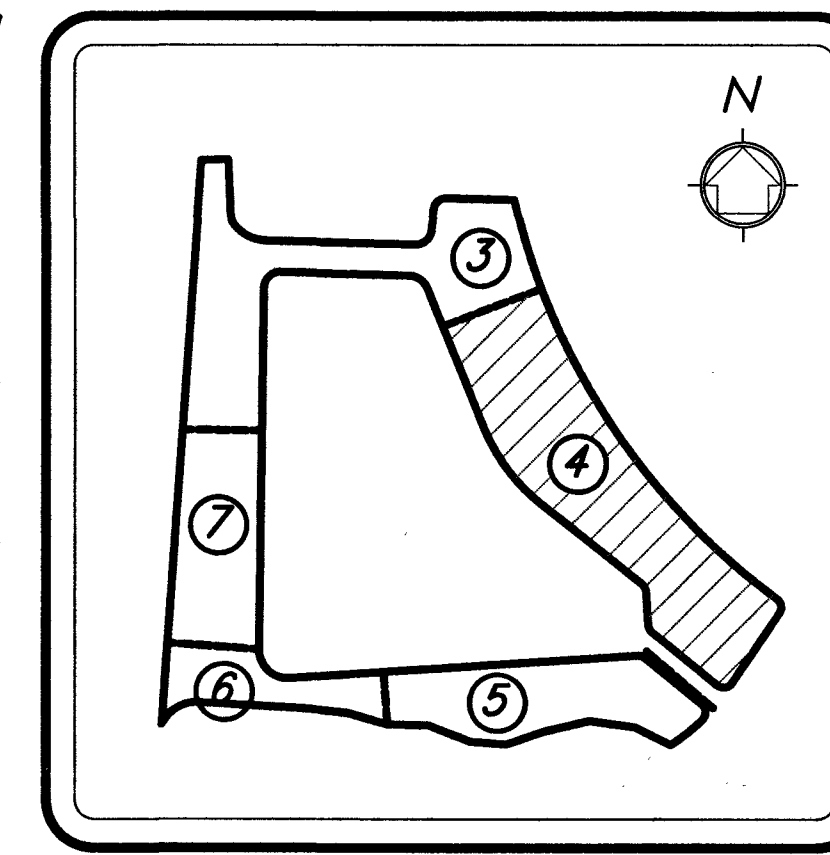


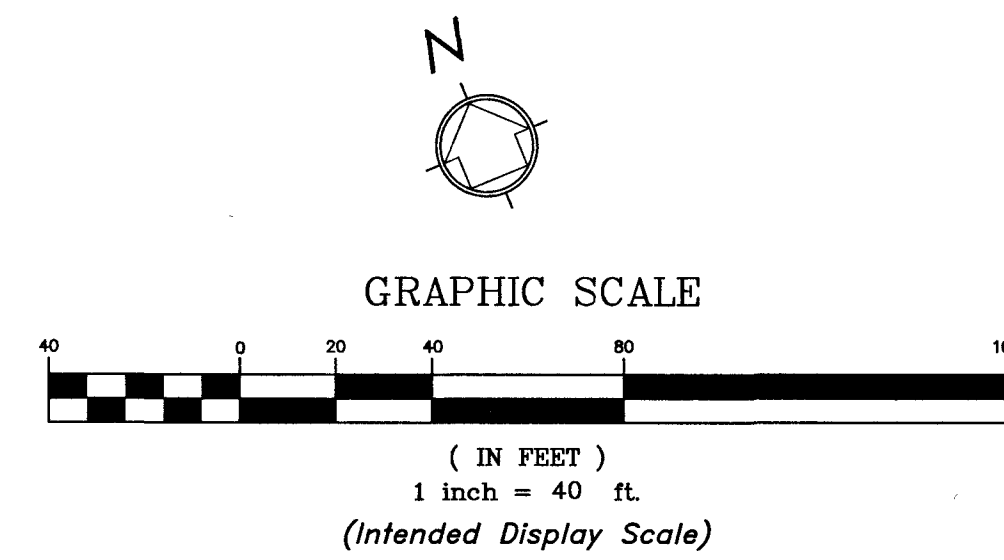
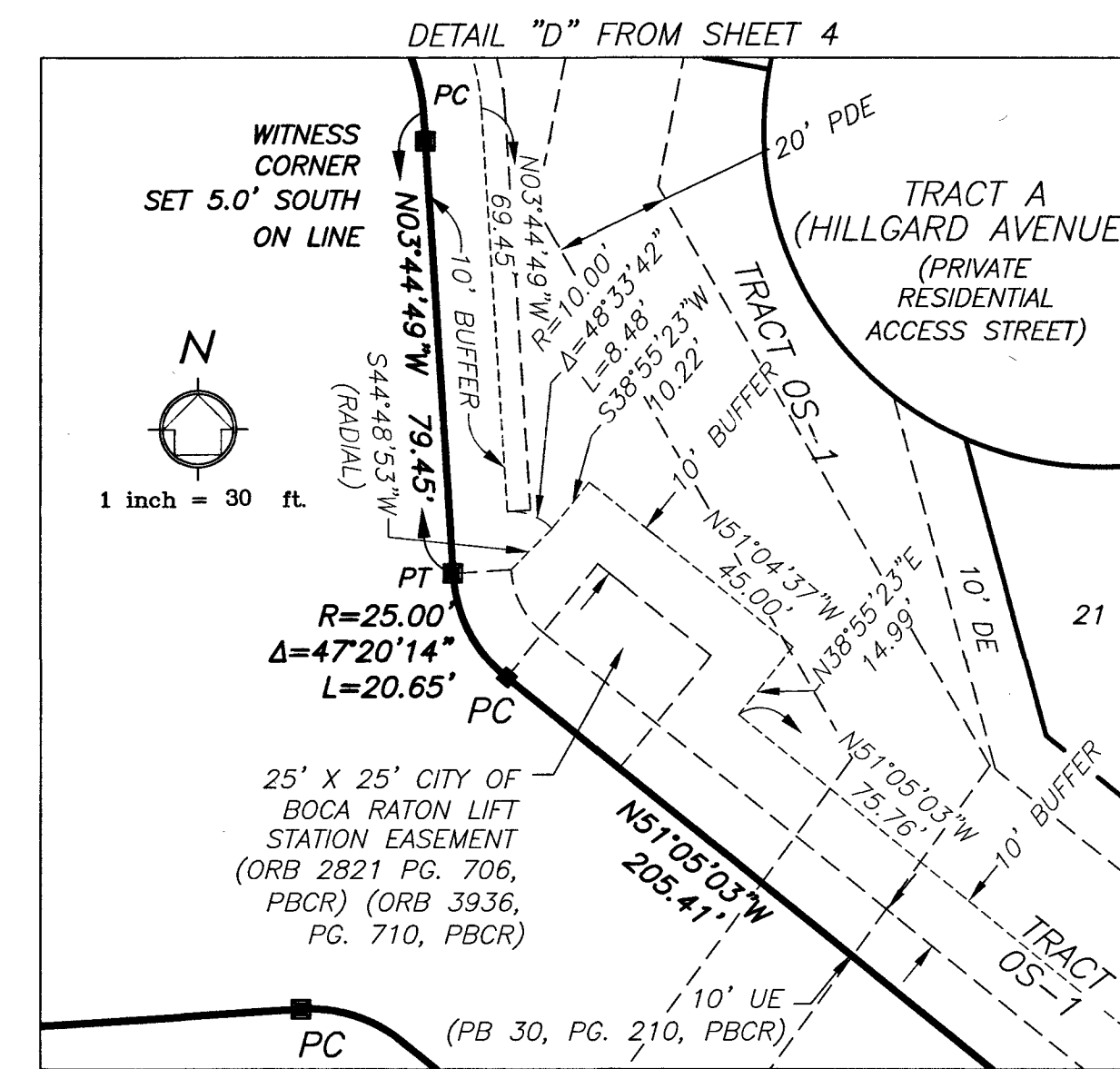
BOCA DEL MAR PUD - COPPER COVE AT MIZNER VILLAGE

BEING A REPLAT OF A PORTION OF TRACT 64 D AND 69 A, BOCA DEL MAR NO. 7 PUD, PLAT BOOK 30, PAGES 210 THROUGH 217 INCLUSIVE OF THE PUBLIC RECORDS, PALM BEACH COUNTY, FLORIDA. LYING AND SITUATE IN SECTION 26 & 27, TOWNSHIP 47 SOUTH, RANGE 42 EAST, PALM BEACH COUNTY, FLORIDA.



SHEET 4 OF 7 SHEETS

4



PALM BEACH COUNTY CONTROL POINT CAM TRAIL FND, PALM BEACH COUNTY BRASS DISC N 731242.919 E 941589.043

NOTE: COORDINATES SHOWN ARE GRID COORDINATES DATUM - NAD 83 (1990 ADJUSTMENT) STATE PLANE FLORIDA EAST ZONE TRANSVERSE MERCATOR PROJECTION LINEAR UNIT = U.S. SURVEY FEET ALL DISTANCES ARE GROUND SCALE FACTOR = 1.000032176 PLAT BEARING = GRID BEARING GROUND DISTANCE X SCALE FACTOR = GRID DISTANCE



2035 Vista Parkway, West Palm Beach, FL 33411 Phone No. 866.909.2220 www.wginc.com Cert No. 6091 - LB No. 7055

THIS INSTRUMENT WAS PREPARED BY KELSEY M. SMITH, P.S.M., PROFESSIONAL SURVEYOR AND MAPPER, LICENSE NO. 7096 FOR THE FIRM: WGI, INC.

- LEGEND**
- BE = Buffer
 - C/L = Center Line
 - CCR = Certified Corner Record
 - CONC. = Concrete
 - CB = Cord Bearing
 - CD = Cord Distance
 - Δ = Delta (Central Angle)
 - DE = Drainage Easement
 - FPL = Florida Power & Light
 - FND. = Found
 - LME = Lake Maintenance Easement
 - LMAE = Lake Maintenance Access Easement
 - LWDD = Lake Worth Drainage District
 - L = Length of Arc
 - LB = Licensed Business
 - NAD = North American Datum
 - NO. = Number
 - NT = Non Tangent
 - (NR) = Non Radial
 - ORB = Official Records Book
 - ⊙ = Permanent Control Point (PCP)
 - PBCR = Palm Beach County Records
 - PG. = Page
 - PB = Plat Book
 - PDE = Public Drainage Easement
 - PRM = Permanent Reference Monument
 - PUD = Planned Unit Development
 - PT = Point of Tangency
 - PC = Point of Curvature
 - PLS = Professional Land Surveyor
 - PRC = Point of Reverse Curvature
 - R = Radius
 - R/W = Right-of-Way
 - RPB = Road Plat Book
 - (TYP.) = Typical
 - UE = Utility Easement
 - ⊙ = Set 4"x4" Concrete (PRM) W/Aluminum Disc Stamped "LB 7055 PRM" Unless Otherwise Noted
 - = Set Nail & Brass Disc Stamped "LB 7055 PRM" Unless Otherwise Noted

